



# Port Engineers Guide



## Grand Bahama Shipyard L I M I T E D

Grand Bahama Shipyard Limited  
P.O. Box F-42623  
Fishing Hole Road  
Freeport, Grand Bahama Island  
The Bahamas  
T: + 1 242 350 4000  
E: [enquiries@gbshipyard.com](mailto:enquiries@gbshipyard.com)  
W: [www.grandbahamashipyard.com](http://www.grandbahamashipyard.com)



## CONTENTS

WELCOME TO GRAND BAHAMA SHIPYARD .....	3
YARD MAP/ LAYOUT .....	4
HEALTH & SAFETY .....	5
COMPANY .....	7
IMPORTANT CONTACTS .....	8
Grand Bahama Shipyard Limited .....	8
Project Managers .....	8
Emergency Contacts .....	8
GENERAL INFORMATION .....	10
On-Site Facilities .....	10
Workshops .....	10
On-Site Cafeteria .....	10
Banking .....	10
Shopping .....	11
Restaurants .....	11
Local Accommodations .....	12
Local Agents .....	14
PROTOCOL .....	15



## WELCOME TO GRAND BAHAMA SHIPYARD

Grand Bahama Shipyard Limited (GBSL) was established in Freeport, Grand Bahama in 2000, as part of a larger plan to develop a maritime center on the island. The Shipyard is located within the Port of Freeport, Grand Bahama, and is approximately 93 nm from Miami and Port Everglades. GBSL is the largest and amongst the most respected, ship repair facility in the Caribbean.

The Yard operates three floating dry docks that can accommodate post Panamax vessels up to 300 m in length. These docks are complimented with excellent facilities, including a pier and a wharf with lay down area with the recent addition of four pits dredged to 24m to accommodate underwater thruster removals. GBSL can accommodate vessels requiring drafts of with an access draft of approximately 17m.

The signature markets of GBSL are the Cruise Industry as well as the Oil and Gas Industry. These two major markets are supplemented with repair and maintenance of commercial vessels. The Yard includes a wide range of shore side facilities, including workshops and warehouses, along with a modern environmental waste treatment plant.

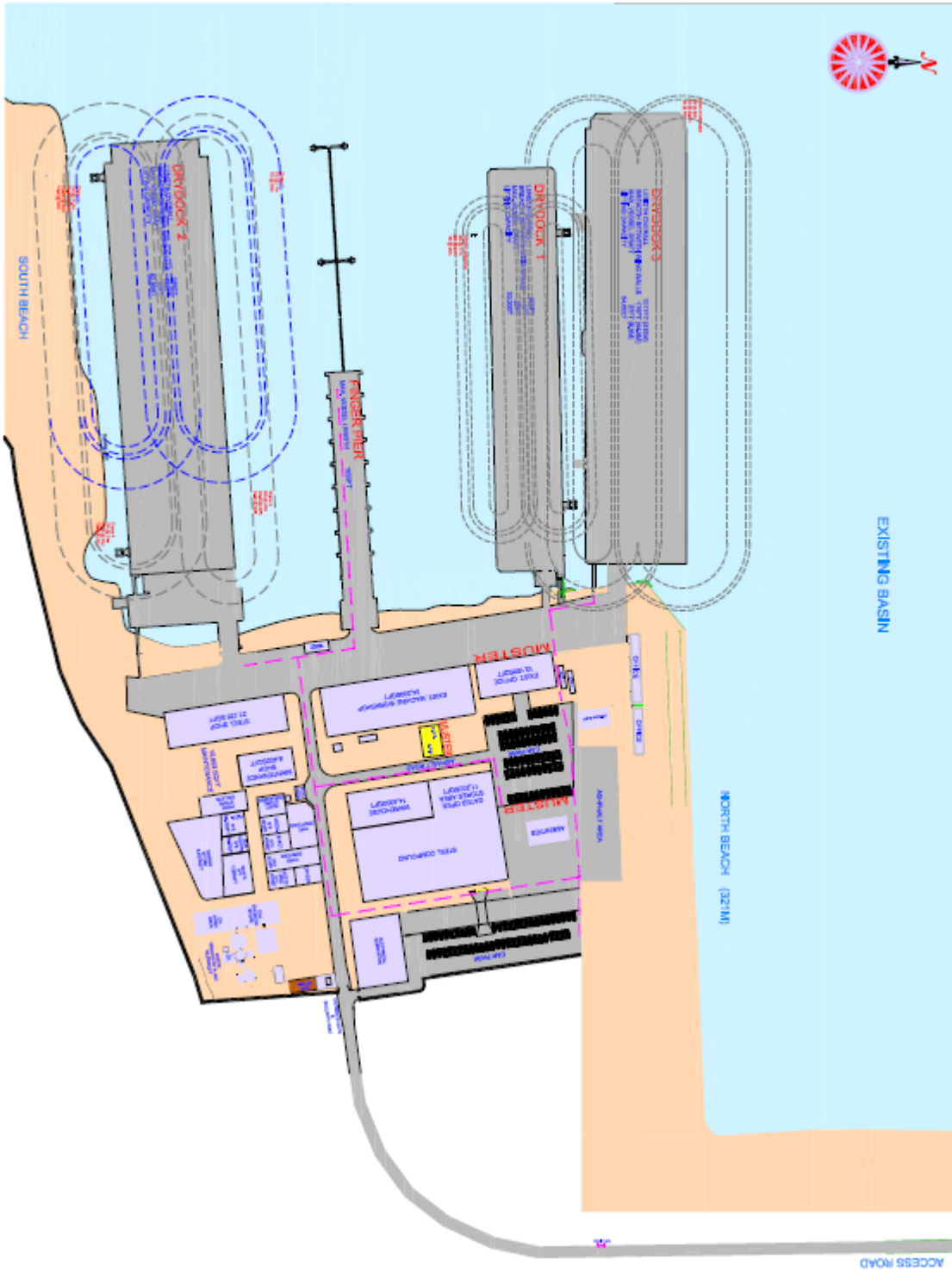
The work is carried out through a coherent framework of measures developed to promote team work, planning, training and discipline to meet the highest standards of Quality and HSE which forms an integral part of the operation. Safety, health, welfare, quality control and environmental concerns are imperative in this operation, and all aspects are watched closely by management who is committed to a policy of effective management and sound business ethics. The Yard is in full compliance with the requirements of ISO 9001 has recently been re-certified in accordance with OHSAS 18001, and are fully certified and operate an Environmental Management System in compliance with ISO 14001 and the ISPS. The Yard is also GTT Certified.

The above, combined with a wide range of facilities, supported by modern management systems, allows Grand Bahama Shipyard Limited to exceed the demanding standards of today's shipyard clientele. Areas of expertise also include various disciplines such as steelwork, welding, mechanical, painting, electrical, complete interiors and mechanical solutions for any type of vessel and any other pertinent services.

Grand Bahama Shipyard Limited is proud of their qualified and motivated personnel and partnerships with ABB, GTT LNG, Rolls Royce, Wartsila, MSHS Hugo Stamp, GCS, Verified Services, SBS Boiler Services, and Hyde Marine. This Port Engineer's Guide will help you to understand the area in which our company operates, as well as provide important information needed to ensure your tenure with us is adequately met. Should you incur additional questions or need further assistance please contact your Project Manager or any member of the GBSL management team.



# YARD MAP/ LAYOUT





## HEALTH & SAFETY

### Emergency & Mustering Procedures

The Grand Bahama Shipyard has an Emergency Response Team and Crisis Management procedure with designated personnel responding to and dealing with an Emergency.

- Personnel who are not designated as part of the ERT must go immediately to their muster stations at the rear of the Office Car Park when the Emergency/Muster Alarm is sounded (Continuous Wailing Siren)
- Ship Crews must agree their emergency actions and Must Points with GBS in the interface document.
- All persons mustered must stay quiet and calm at their designated station until the all clear is given or assistance is requested.
- All personal phone calls and smoking are banned during and throughout emergency musters.



### Security

Security at Grand Bahama Shipyard Limited is carried out by a professional security Contractor.

The Yard follows the International Ship & Port Facility Security Code (ISPS).

The (ISPS) Security status changes as the Security risk increases from Security Level 1 (normal) through Security Level 2 (heightened) up to Security Level 3 (exceptional) and restrictions on visitors will increase.

- Depending on the circumstances AT Level 3 visitors may not be allowed in, unless their business is urgent and they receive special permission to enter the yard.
- Personnel searches of vehicles will be carried out on a random basis.
- During high alerts all vehicles will be searched.
- The taking of photographs in the GBSL yard is forbidden without permission.

### Evacuation of Ship Procedures

All new employees must familiarize themselves with the evacuation procedures and also make themselves aware of the various access/exit routes onboard vessels.

Ensure you are aware of:

- The location of First Aid, Fire-fighting Equipment and Escape Routes.
- The location of relevant Assembly Point and remember: report to your manager/supervisor at the Assembly Point.

### Environmental Issues

The company promotes and maintains a policy, which ensures that the impact of its operations upon the environment is reduced to as low a level as is practicable.



All employees must act responsibly to avoid damage to the environment and:

- Must not interfere with or misuse any plant or equipment and in particular, anything provided for pollution control purposes;
- Cooperate fully with management to ensure that the company carries out its work in compliance with the law as well as its own standards; and
- Report immediately to management any incorrect procedure, incident, occurrence, defective tools, equipment or hazards which has come to their attention in the course of their work and which may have adverse impact on the environment.

#### Smoking Regulations

No smoking is allowed on any vessel unless a smoking area is provided by the ship.  
The GBSL office is a non-smoking area.

#### Personal Protective Enforcements

The Company takes measures to protect employees from work hazards and the employees have a legal obligation to ensure their own safety by wearing their PPE correctly. All PPE is available at Stores in the Warehouse.

##### Head Protection

- The Safety helmet provided by the Company must be assembled and worn to the manufacturer's instruction, which are inside the helmet.
- Never alter or modify the shell or suspension system.
- DO NOT place or carry any object between the suspension and shell, or between the suspension and your head. This space is needed when the shell/suspension absorbs the force of an impact.
- Wear your helmet square on the head; not tipped forward, backward, or to the side.
  
- DO NOT use paint, solvents, chemicals, adhesives, and petrol or like substances on the helmet. Such substances can destroy the impact resistance and other properties of the helmet. Clean only with mild soap and warm water.
- The helmet's useful life is affected by heat, cold, impact force, chemicals and sunlight and hence should be inspected by the wearer at regular intervals.
- Also check the inside suspension for cracks and fraying.

##### Eyes and Face Protection

- All personnel should wear approved safety glasses at work sites; a face mask and goggles must be worn by all personnel carrying out Grinding, water-blasting and for all dust/fibre operations and de-scaling.

Hearing Protection: Ear protection should be worn in all designated areas identified by blue safety signs.

Respiratory Protection: There are two (2) forms of masks, one for dust and fibres and another for fumes and vapors. Ensure you wear the right respiratory protection.

Hand Protection: Wear gloves when handling sharp or hazardous objects.

Body Protection: Company supplied overalls must be worn at all times.

Foot Protection: Company supplied safety boots must be worn at all times.

Note: A Safety Induction is conducted upon arrival into the yard. This is carried out by the Safety Manager/Officer.



## COMPANY

The following are short biographies of our executive team who collectively, bring a wealth of knowledge and experience to the company.

### **Steven Jervis, Chief Executive Officer**

Steven Jervis joined the Grand Bahama Shipyard team in November 2015. He is an experienced business leader, having been involved at senior levels within the aerospace and ship repair industry, prior to starting his own company to develop a real estate opportunity in the Bahamas.

### **Linda Turnquest, Chief Financial Officer**

Linda Turnquest is the VP of Finance and Administration. She was offered the position of Finance Manager, at the Grand Bahama Shipyard Limited and was challenged with setting up the Finance Department and develop a computerized accounting system for this greenfield site in Freeport.

### **Dave Skentelbery, Chief Commercial Officer**

Dave Skentelbery joined the Grand Bahama Shipyard in January 2016 as VP of Commercial after a two year period in India where he commissioned and started a new ship repair yard. Dave is an experienced marine industry executive with over 40 years working in the industry. He started his career in the Merchant Navy, has a Masters Foreign going certificate and has served as Master on Offshore Vessels.

### **Robert 'Graham' Couser, VP Sales and Marketing**

Graham Couser joined the Grand Bahama Shipyard in April 2000 as Commercial Manager after a period with the previous Owner of the Freeport facility, the renowned UK ship repair company Cammell Laird. Graham is an experienced marine industry executive with over 40 years working in the industry. He started his career as an apprentice mechanical engineer at Harland and Wolff, Belfast, whilst continuing his studies in marine engineering, project management and commercial law.

### **Don Kierce, VP Operations**

Donald "Don" Kierce joined the Grand Bahama Shipyard team in November 2010. Before joining GBSL, Don was a Consultant for Project Solution/ Ship Constructors where he managed the new construction of 3 oil tanker power modules. During his 28 year career in the marine industry, he has successfully embraced positions in production from an apprentice to Production Manager.





## IMPORTANT CONTACTS

### Grand Bahama Shipyard Limited

Main Office: + 1 242 350 4000  
Fax: + 1 242 350 4010  
Main Gate: +1 242 350 4000 ext. 4130  
Pedestrian Gate: +1 242 350 4000 ext. 4131

### Project Managers

Jim Pinckney  
Senior Project Manager  
+1 242 350 4000 ext. 4069  
[jpinckney@gbshipyard.com](mailto:jpinckney@gbshipyard.com)

Craig Stark  
Cruise Service Manager  
+1 242 350 4000 ext. 4029  
[cstark@gbshipyard.com](mailto:cstark@gbshipyard.com)

Shannon Cooper  
Project Manager  
+1 242 350 4000 ext. 4062  
[scooper@gbshipyard.com](mailto:scooper@gbshipyard.com)

Martin Currie  
Project Manager  
+ 1 242 350 4000 ext. 4229  
[mcurrie@gbshipyard.com](mailto:mcurrie@gbshipyard.com)

Gerard Douglas  
Project Manager  
+1 242 350 4000 ext. 4068  
[gdouglas@gbshipyard.com](mailto:gdouglas@gbshipyard.com)

John Howard  
Project Manager  
+ 1 242 350 4000  
[jhoward@gbshipyard.com](mailto:jhoward@gbshipyard.com)

Andrzej Joskowiak  
Project Manager  
+1 242 350 4000 ext. 4002  
[ajoskowiak@gbshipyard.com](mailto:ajoskowiak@gbshipyard.com)

Andrew Kemp  
Project Manager  
+1 242 350 4000 ext. 4033  
[akemp@gbshipyard.com](mailto:akemp@gbshipyard.com)

### Emergency Contacts

Health, Safety, Security and Environment Department:  
HSSE Manager: Tyrone Farquharson: +1 242 350 4047  
Occupational Health Nurse: Sabrina Sweeting: +1 242 350 4164





## HOSPITALS/CLINICS

1. Rand Memorial Hospital  
East Atlantic Dr.  
Freeport, GBI, Bahamas  
+ 1 242 352 6735
2. Sunrise Medical Centre & Hospital  
East Sunrise Highway  
Freeport, GBI, Bahamas  
+ 1 242 373 3333
3. The Medical Pavilion  
East Sunrise Highway  
Freeport, GBI, Bahamas  
+ 1 242 373 1122
4. Walk-In Medical Clinic  
Sibony Plaza, Mall Drive  
Freeport, GBI, Bahamas  
+ 1 242 352 9045
5. Lucayan Medical Centre  
East Sunrise Highway  
Freeport, GBI, Bahamas  
+ 1 242 373 7400
6. St. Jude's Medical Centre (Gynecology)  
11B Coral Road  
Freeport, GBI, Bahamas  
+ 1 242 373 2544

## FIRE STATION

Freeport: +1 242 352 8888  
Eight Mile Rock: +1 242 348 2911  
West End: +1 242 346 6444  
Emergency: (911)

## CENTRAL POLICE STATION - GRAND BAHAMA

+1 242 350 3130 or +1 242 350 3139  
Emergency: (919)

## AMBULANCE

+1 242 352 2689 or +1 242 350 3019

## AAS LIFEFLIGHT (AIR AMBULANCE)

+1 242 377 1606 or +1 242 323 2186





## GENERAL INFORMATION

Grand Bahama Shipyard Limited is located on Fishing Hole Road, Freeport, Grand Bahama. You will find all departments on site.

### On-Site Facilities

- 3 Floating Dry-docks
- 1 Wharf with Lay-Down Area
- 1 Fully Serviced Pier
- Gray and Black Water Reception
- Interior and Exterior Storage
- Life Boat Repair

### Workshops

- Steel and Pipe
- Mechanical
- Carpentry
- Electrical
- LNG Clean Room



### On-Site Cafeteria

GBSL's cafeteria provides food options from three vendors, all serving breakfast, lunch and dinner. The cafeteria is open for all within the yard.

### Banking

Most banking institutions are located in the downtown area of the island. This is a 15 minute drive outside the yard and can be accommodated through taxi.

#### Banking Institutions

- Royal Bank of Canada (RBC Finco)
- Scotia Bank
- Commonwealth Bank
- First Caribbean International Bank



**East and North Beach Wharfs**

**Dry Dock No. 3**

**Dry Dock No. 1**

**Finger Pier (North/South)**

**Dry Dock No. 2**

**Grand Bahama Shipyard Limited** is located in Freeport, Grand Bahama, Bahamas approximately 93 nm east of Miami, Florida. **GBSL** can accommodate vessels up to 82,500 tonnes and over 300 m in length.

	<b>Floating Dock #1</b>	<b>Floating Dock #2</b>	<b>Floating Dock #3</b>	<b>Finger Pier</b>	<b>North Beach Wharf</b>
Overall Length	268.3 m (880 ft)	300 m (985 ft)	310 m (1017 ft)	300 m (985 ft)	300 m (985 ft)
Breadth between Wing Walls	33.5 m (115 ft)	58.5 m (192 ft)	54.6 m (179 ft)	—	—
Maximum Vessel Draft	6.5 m (21 ft)	8.5 m (27 ft)	8.5 m (27 ft)	14 m (42 ft)	14 m (42 ft)
Maximum Water Depth	—	—	—	16 m (48 ft)	20 m (60 ft)
Thruster Pits	—	—	—	—	4 x 24 m pits
Dock Lifting Capacity	27,000 tonnes	82,500 tonnes	50,000 tonnes	—	—
Number of Cranes	2 dock cranes	4 dock cranes	2 dock cranes	1 dock crane	3 mobile cranes
Crane Capacity	2 x 20 tonnes	2 x 24 tonnes 1 x 26 tonnes 1 x 32 tonnes	2 x 40 tonnes	1 x 16 tonnes	1 x 20 tonnes 1 x 175 tonnes 1 x 300 tonnes

### Facilities

- 3 Floating Drydocks
- 2 Wharfs with Lay-Down Areas
- 1 Fully Serviced Pier
- Grey and Black Water Reception
- Interior and Exterior Storage
- Life Boat Repair

### Services

- Drydocking and Afloat Repairs
- Steel and Pipe Fabrication /Repair
- Interior/Exterior Blasting and Coating
- Electric Motor Overhaul
- Cabin and Public Space Installations
- Naval Architects and Engineers
- Riding Squads
- Life Boat Repairs
- Insulation Replacement
- Main Engine Overhaul Capability
- Aluminum Fabrication/Repair
- HVAC Fabrication/Replacement

### Workshops

- Steel and Pipe
- Mechanical, Carpentry
- Electrical with baking ovens and rewind capabilities
- LNG Clean Room
- Clean Room for thruster overhaul

Lloyd's Register (LRQA) CERTIFICATIONS: OHSAS 18001 / ISO 14001 / ISO 9001  
I.S.P.S. Compliant / GTT APPROVED

# Grand Bahama Shipyard

L I M I T E D

P.O. Box F-42623  
411 Fishing Hole Road  
Freeport, Grand Bahama, The Bahamas  
(p) +1 242-350-4000 / (f) +1 242-350-4010  
enquiries@gbshipyard.com  
[www.grandbahamashipyard.com](http://www.grandbahamashipyard.com)





## Shopping

There are a number of shopping plazas on the island that are able to accommodate your everyday needs. Most being located in the Lucaya and Downtown area. Taxi or public bus service would be a suitable means of transport to these areas.

## Restaurants

The island hosts a variety of restaurants from Mediterranean to true Bahamian cuisine. Most are located within 20 – 30 minutes outside the yard. The list below contains just a few of what the island has to offer.

The link provides a detailed list of all restaurants on the island – from east to west.

[http://www.bahamas.com/directory?title=&island=18&things\\_to\\_do=249&services=All&category=things\\_to\\_do](http://www.bahamas.com/directory?title=&island=18&things_to_do=249&services=All&category=things_to_do)

---

Agave Latin Restaurant	(242) 374-4887
Cappuccino's	(242) 373-1584
China Beach	(242) 373-2960
China Cafe	(242) 373-2664
China Grill	(242) 350-5306
Churchill's Chop House & Bar	(242) 350-5306
Cruzin' Cafe	(242) 352-9874
Dive-In Marina Bar & Restaurant	(242) 373-5183
Flying Fish	(242) 373-4363
Giovanni's Cafe	(242) 373-9107
Le Med Mediterranean Restaurant & Bar	(242) 374-2804
Livity Vegetarian Take-Out & Juice Bar	(242) 352-1855
Luciano's	(242) 373-9100
Mary Ann's	(242) 352-8875
Molly Malone's	(242) 373-8404
Pier One and East	(242) 352-6674
Pink Pearl Restaurant	(242) 349-4006
Pisces Seafood Restaurant	(242) 373-5192
Ruby Swiss Restaurant	(242) 352-8507
Sabor Restaurant & Bar	(242) 373-5588
Señor Frogs	(242) 351-3764
Silk Cafe	(242) 351-5445
The After Deck	(242) 373-8657
Waves Bar & Grill	(242) 373-1333
Willy Broadleaf	(242) 350-5306
Zorba's Greek Cuisine	(242) 373-6137

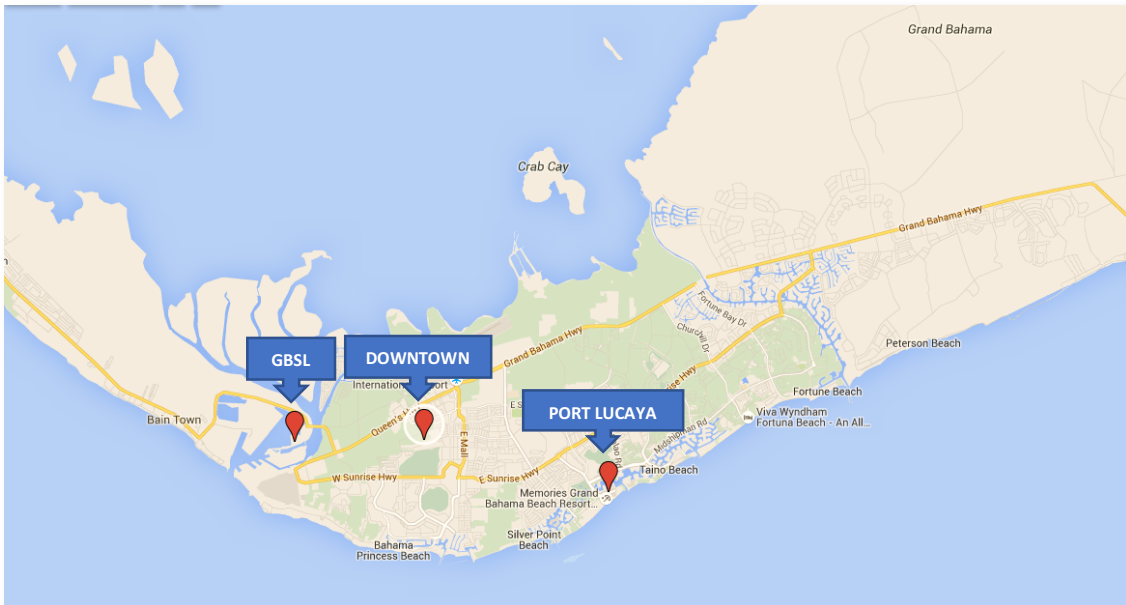
---



## Local Accommodations

Hotel arrangements can be made through your local agents.

1. Bell Channel Inn  
King's Road  
Freeport, GBI, Bahamas  
Tel: +1 242 373 1053
2. Bishop's Bonefish Resort  
High Rock, GBI, Bahamas  
Tel: +1 242 353 4515
3. Blue Marlin Cove  
West End, GBI, Bahamas  
Tel: +1 242 349 4101  
+1 772 485 0040
4. Castaways Resort & Suites  
East Mall & Goombay Drive  
Freeport, GBI, Bahamas  
Tel: +1 242 352 6682
5. Deep Water Cay Club  
Deep Water Cay  
GBI, Bahamas  
Tel: +1 242 353 3073
6. Dundee Bay Villas  
20 Dundee Bay Drive  
Freeport, GBI, Bahamas  
Tel: +1 242 352 8038
7. Flamingo Bay Hotel & Marina  
Jolly Roger Drive  
Lucaya, GBI, Bahamas  
Tel: +1 242 373 5640
8. Freeport Resort & Club  
Rum Cay Drive  
Freeport, GBI, Bahamas  
Tel: +1 242 352 5371
9. Grand Lucayan  
Royal Palm Way  
Lucaya, GBI, Bahamas  
Tel: +1 242 373 1333
10. Island Palm Marina Villas at Island Seas  
Resort  
Freeport, GBI, Bahamas  
Tel: +1 242 373 1271
11. Island Resort & Golf Club  
Freeport, GBI, Bahamas  
Tel: +1 242 352 9270
12. Island Seas Resort  
Freeport, GBI, Bahamas  
Tel: +1 242 373 1271
13. Memories Grand Bahama Beach & Casino  
Resort  
1 Seahorse Lane, Lucaya, GBI, Bahamas  
Tel: +1 242 350 3232
14. Ocean Pearl Bonefishing Resort  
High Rock, GBI, Bahamas  
Tel: +1 242 353 4240
15. Old Bahama Bay  
Bayshore Road, West End, GBI, Bahamas  
Tel: +1 242 350 6500
16. Paradise Cove Beach Resort  
Deadman's Reef, GBI, Bahamas  
Tel: +1 242 349 2677
17. Pelican Bay Hotel  
Seahorse Road, Lucaya, GBI, Bahamas  
Tel: +1 242 373 9550
18. Pelican Point Beach Lodge  
Pelican Point, GBI, Bahamas  
Tel: +1 242 353 6064
19. Royal Islander Hotel  
Freeport, GBI, Bahamas  
Tel: +1 242 351 6000
20. Sandy Beach Villas  
Pelican Point, GBI, Bahamas  
Tel: +1 242 442 9555
21. Sunrise Resort & Marina  
208 Kelly Court, Freeport, GBI, Bahamas  
Tel: +1 242 352 6834
22. Taino Beach Resort & Club  
Jolly Roger Dr., Freeport, GBI, Bahamas  
+1 242 373 4677
23. Viva Wyndham Fortuna Beach  
Churchill Dr. & Doubloon Rd., Lucaya  
GBI, Bahamas  
Tel: +1 242 373 4000



Map of Freeport



## Local Agents

1. BAHAMAS LOGISTICS MGMT.  
Contact: Jermaine Bethel  
Island Projects Plaza, Suite 6, Queen's Highway  
P.O. Box F-42680  
Freeport, GBI, Bahamas  
Tel: +1 242 352 2111  
Fax: +1 242 352 2114  
Mobile: +1 242 375 2615  
Email: [jbethel@blmltd.com](mailto:jbethel@blmltd.com)  
[www.blmltd.com](http://www.blmltd.com)
2. BAHAMAS SHIP LOGISTICS  
Contact: Troy Cartwright  
Harcourt Development Building  
P.O. Box F40724  
Freeport, GBI, Bahamas  
Tel: +1 242 352 7438  
Mobile: +1 242 727 5322  
Email: [troy@bahamasship.com](mailto:troy@bahamasship.com)  
[www.bahamasship.com](http://www.bahamasship.com)
3. ELNET MARITIME LIMITED  
Contact: Elbert Hepburn  
Blue Marlin Suite 3  
Freeport Harbor Retail Complex  
P.O. Box F-43715  
Freeport, GBI, Bahamas  
Tel: +1 242 352 4368 ext. 23  
Email: [elnet@elnetmaritime.com](mailto:elnet@elnetmaritime.com) or  
[ellie@elnetmaritime.com](mailto:ellie@elnetmaritime.com)  
[www.elnetmarine.com](http://www.elnetmarine.com)
4. FREEPORT SHIP SERVICES  
Contact: Jeremy Cafferatta  
P.O. Box F-40423  
Freeport, GBI, Bahamas  
Tel: +1 242 351 44343  
Mobile: +1 242 727 9170  
Email: [Jeremy@freeportshipservices.com](mailto:Jeremy@freeportshipservices.com),  
[ops@freeportshipservices.com](mailto:ops@freeportshipservices.com)  
[www.freeportshipservices.com](http://www.freeportshipservices.com)
5. INTERNATIONAL SHIPPING AGENCY LTD.  
Contact: Kent Ward  
Freeport Harbor Complex  
Building #2, Suite 9  
P.O. Box F-40302  
Freeport, GBI, Bahamas  
Tel: +1 242 351 4754 or  
+1 305 921 0361  
Fax: +1 242 351 4854  
Mobile Contacts:  
Kent Ward +1 242 727 5895 or  
Deann Lotmore  
Email: [info@isabahamas.com](mailto:info@isabahamas.com) or  
[agency@isabahamas.com](mailto:agency@isabahamas.com)
6. ISS FREEPORT LTD.  
Contact: Galen Forbes  
Kashea's Business Centre, Suite 1&2  
West Atlantic Drive  
P.O. Box F-42463  
Freeport, GBI, Bahamas  
Tel: +1 242 352 7123 or  
+1 242 352 7124  
Mobile: +1 242 727 2165  
Email: [iss.freeport.bahamas@iss-shipping.com](mailto:iss.freeport.bahamas@iss-shipping.com)  
[www.iss-shipping.com](http://www.iss-shipping.com)
7. KAIROS MARITIME SERVICES BAHAMAS LTD.  
Contact: Mario Sturupp  
#8 Ginza Building  
P.O. Box F-44466  
International Bazaar  
Freeport, GBI, Bahamas  
Tel: +1 242 687 2650 or  
+1 242 687 2685  
+1 713 489 1610  
Mobile: (AOH Contacts)  
Joanel Louis /+1 242 727 4534  
Jimmie Louis /+1 242 727 5790  
Mario Sturupp /+1 242 727 2002  
Email: [ops@kairosmaritime.com](mailto:ops@kairosmaritime.com)  
[www.kairosmaritime.com](http://www.kairosmaritime.com)
8. LUCAYA SHIPPING & TRADING CO. LTD.  
Contact: Edward Duncombe  
P.O. Box F-43240  
Queen's Highway  
Freeport, GBI, Bahamas  
Tel: +1 242 352 3581  
Email: [luship@coralwave.com](mailto:luship@coralwave.com)  
<http://www.lucayashipping.com/>
9. MSC BAHAMAS LTD.  
Contact: Manuel Ruiz  
24 Logwood Road  
PO BOX F43113  
Freeport, Bahamas  
Tel: +1 242 351 1158  
Email: [mruiz@msc-bahamas.com](mailto:mruiz@msc-bahamas.com)  
[www.msc.com](http://www.msc.com)



10. PROFESSIONAL BROKERS AGENCY  
Contact: Luther Cartwright  
#12 Milton & Keats Street, Queen's Highway  
P.O. Box F-42330  
Freeport, GBI, Bahamas  
Tel: +1 242 351 3839 or  
+1 242 351 1191  
Fax: +1 242 351 2713  
Mobile: +1 242 717 3544  
Email: [info@pbagency.com](mailto:info@pbagency.com) or  
[lburrows@pbagency.com](mailto:lburrows@pbagency.com)  
[www.pbagency.com](http://www.pbagency.com)

11. RELIANCE MARITIME AGENCY  
Contact: Frederick Hall  
The Executive Office Center, Suite # 1, West  
Mall Drive  
P.O. Box F-43903  
Freeport, GBI, Bahamas  
Tel: +1 242 352 7241

Fax: +1 242 352 7240  
Mobile Contacts:  
Frederick Hall /+ 1 242 727 5278  
Devan Bostwick /+ 1 242 559 7177  
Email: [ops@reliancemaritimeagency.com](mailto:ops@reliancemaritimeagency.com)  
[www.reliancemaritimeagency.com](http://www.reliancemaritimeagency.com)

12. WIDE WORLD FORWARDING  
Contact: Martin Munroe or Sam Melvin  
#7 Queen's Highway  
P.O. Box F-43869  
Freeport, GBI, Bahamas  
Tel: +1 242 352 3636 or  
+1 305 433 4871  
Mobile: +1 242 727 4558  
Email:  
[Martin.Munroe@wideworldforwarding.com](mailto:Martin.Munroe@wideworldforwarding.com)  
[www.wideworldforwarding.com](http://www.wideworldforwarding.com)

## PROTOCOL

Upon your arrival a Safety Induction will be held so that you can become familiar with safety procedures carried out by the Yard. Once this is done, any issues you may experience can be directed firstly to the Project Manager or secondly to the Ship Manager.

- Note: If it is a Safety matter, please direct it to our Safety Manager (contact info found in the Emergency Contacts of this document, pg.9)

If further assistance is needed our Main Office is open Monday – Friday, 8:00am – 5:00pm.